

## ERH32 series extend rotary handle

### Features

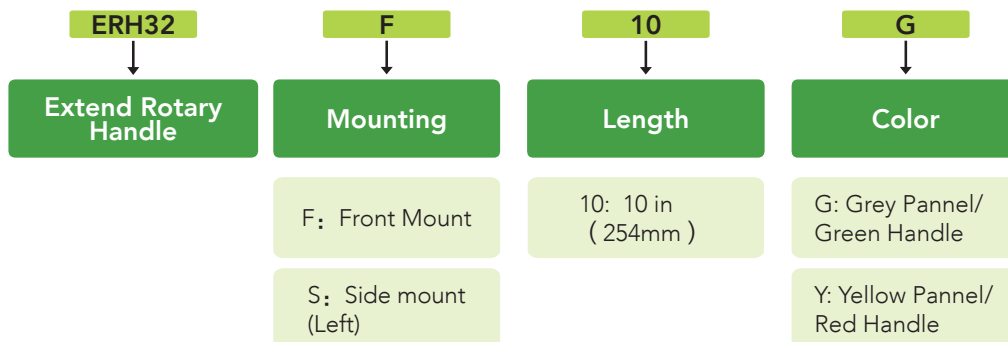
#### Features:



ERH32 series extend rotary handle can be used for 2/3/4 poles of B1 series MCB. It can be mounted in the front and left side.

- Equipped with OFF position locking function
- The handle can be unlocked when emergency.
- Operations: 10000
- Certification: UL 489; UL 1077

#### Selection Guide:



Product number	Product	Description
1002718	ERH32F10G	Extend Rotary Handle Front mount Grey Pannel/Green Handle with 10 in(254mm) shaft
1002719	ERH32F10Y	Extend Rotary Handle Front mount Yellow Pannel/Red Handle with 10 in(254mm) shaft
1002722	ERH32S10G	Extend Rotary Handle Side mount(Left) Grey Pannel/Green Handle with 10 in(254mm) shaft
1002723	ERH32S10Y	Extend Rotary Handle Side mount(Left) Yellow Pannel/Red Handle with 10 in(254mm) shaft
1002817	ES3220	Extension Rotary Shaft 20 inch (500mm)10mm x 10mm

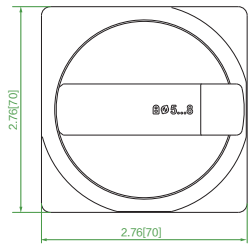
\*: Please order ES3220 product if you need 20 inch shaft.

# ERH32 series extend rotary handle

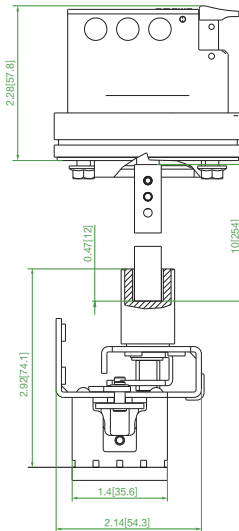
## Dimensions

### Front Mount

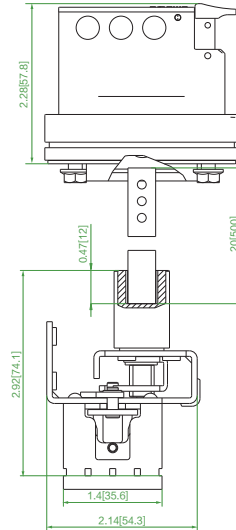
Unit :in [mm]



10 inch axle:

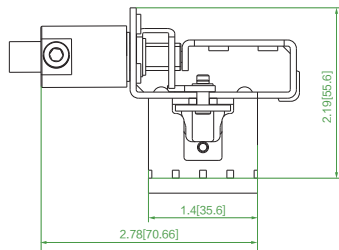
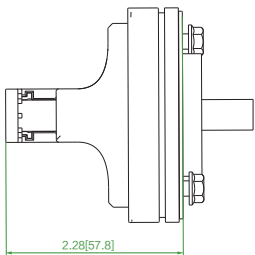


20 inch axle:

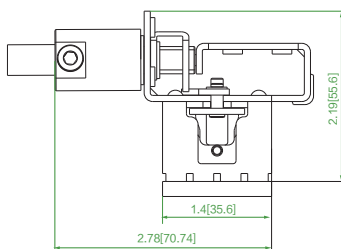
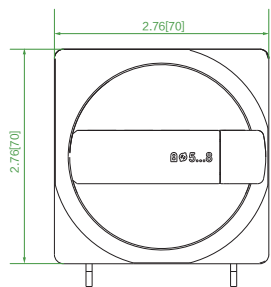
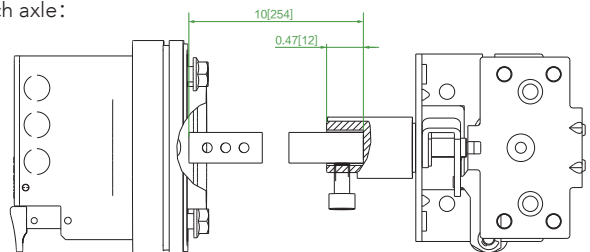


### Left Side Mount:

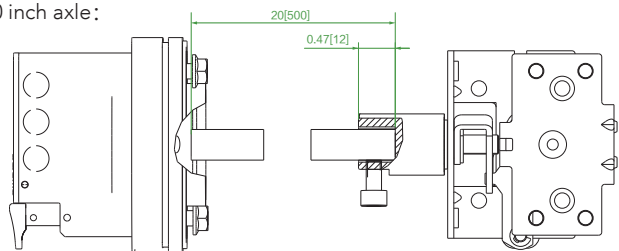
Unit :in [mm]



10 inch axle:



20 inch axle:



### 20 inch shaft

Unit :in [mm]

