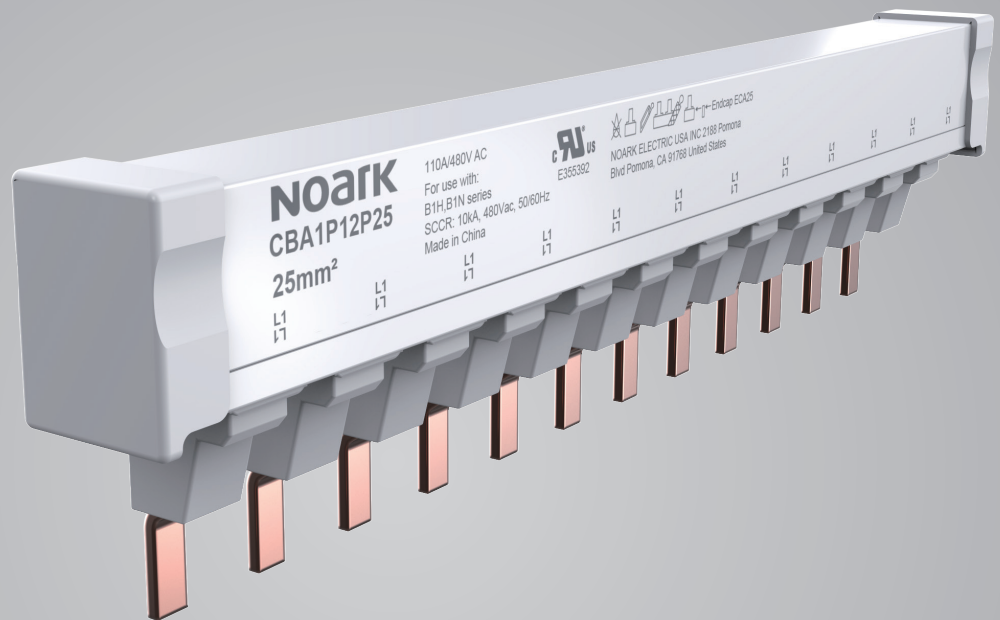


NOARK®

Catalog CBA Comb Busbar



Company Overview

About us

NOARK Electric is a global manufacturer of low-voltage electrical components for industrial applications. We specialize in motor controls and circuit protection for original equipment manufacturers. Our mission is to provide customers with the highest quality products at an exceptional value and back them with world-class service and support. Every NOARK product is tested and certified to the highest industry standards and covered by our exclusive five-year limited warranty.

Research and Development

The entire portfolio of high-quality NOARK products is designed for manufacturing and assembly (DFMA). Each component is developed in-house by our engineering team to meet the strictest standards and performance requirements. This dedication to excellence has led to the development of patented technology found in many of our products.

World-class Manufacturing

After being thoroughly tested, approved and certified – each NOARK product is sent into production at our state-of-the-art manufacturing facilities. This allows us to maintain strict quality control standards throughout the manufacturing process. In addition, NOARK Electric adheres to a policy of environmental protection and sustainability.

North American Distribution

NOARK's primary distribution center is located in Pomona, CA, with the aim of ensuring prompt and reliable deliveries of the entire product range to our customers all over North America. Our supply chain team works closely with our factories and logistics partners to ensure the availability of our products on the North American market and provide logistics services on the level which our customers expect.

NOARK Electric is a wholly subsidiary of the largest electrical manufacturing group in Asia with over 30 thousand employees and sales revenue of \$10 billion USD. We have corporate facilities in Los Angeles, Shanghai and Prague to service the requirements of individual markets and countries.

140+	300+	20	22	3	10,000,000+	30,000+
Countries	Overseas Distributors	Overseas Subsidiaries	Logistics Centers	R & D Centers	Sq.Ft. Manufacturing Space	Employees Worldwide



CBA Comb busbar

Table of Contents

CBA Comb busbar

Features.....01

Standard and Certification01

Product Selection Guide02

Specifications03

Dimensions.....04

Accessory Specifications05

Accessory Dimensions.....06

Assembly Instructions.....09

CBA Comb busbar

Features/Standard and Certification

Description

CBA comb busbars meet the UL489 certification and are also applicable to miniature circuit breakers meeting the UL489 standard. The maximum rated current can reach 110A, and can be cut to the required length separately. In addition, it can be equipped with up and bottom feed terminals, end covers and protective cover accessories, which can be used for fast wiring of multi branch circuits in control cabinets in North America market.

Features

- Convenient installation to enhance the efficiency of customer use.
- Flexible cutting to meet individual customer needs.
- It is fully certified and meets the requirements of UL489 MCB.

Standard and Certification

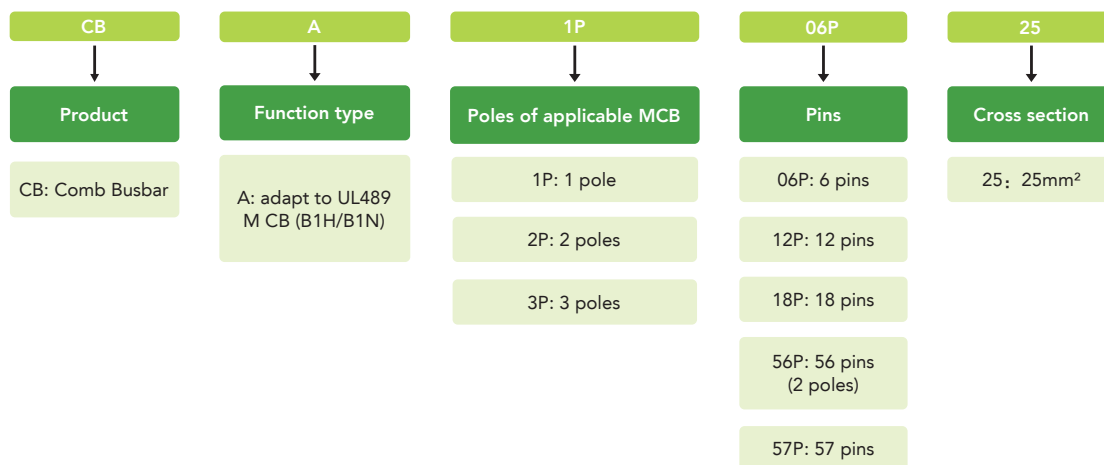
- Comply with UL489, CSA C22.2 No.5, 4th Ed
- Meet RoHS standards
- Adapt to UL489 miniature circuit breaker



CBA Comb busbar

Product Selection Guide

Product Selection Guide



Product Name	CBA Comb busbar
Applicable standards	UL489, CSA C22.2 No.5, 4th Ed
Environmental requirements	RoHS
Certification	Adapt to UL489 MCB products
Poles	1P,2P,3P
Rated working voltage V AC	480
Rated operating frequency Hz	50/60
Rated working current A	*End feed:100
	*Center feed: 110
Short circuit current rating	10kA @480V AC
Cross-section mm ² /AWG	25/4
Overvoltage category	III
Pollution levels	3

***Note:**

End feed: Wiring from the left or right end of the bus bar through the accessories of the feeding terminals, with the maximum current not ex-ceeding 100A;
Center feed: Wiring from the middle of the bus bar through the accessories of the feeding terminals, with the maximum current not exceeding 110A.

CBA Comb busbar

Specifications

Ordering Code and Description

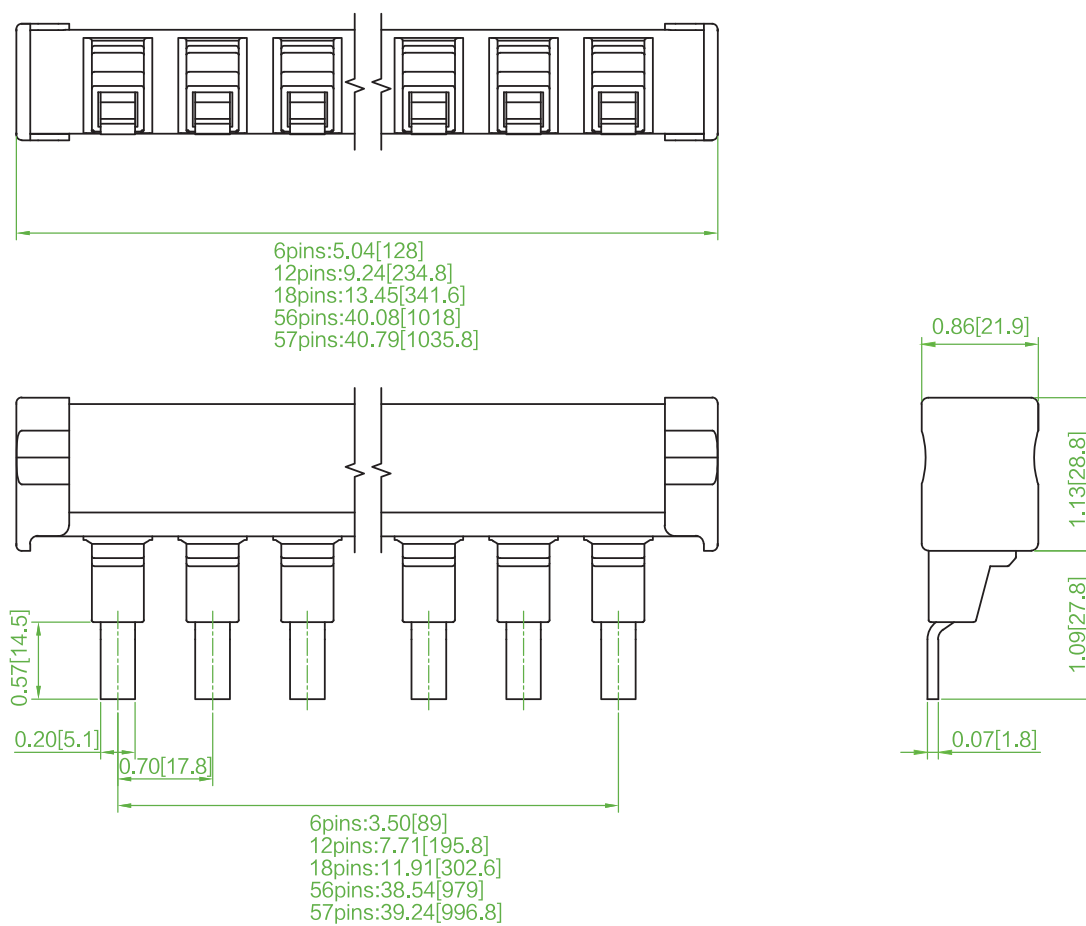
Ordering code	Material code	Material description	Poles	Pins	Section cross (mm ²)	Net weight (kg)	Depth (mm)	Width (mm)	Height (mm)
1002702	CBA1P06P25	CBA 1P 6 Pins 25mm ²	1	6	25	0.09	128	22	57
1002703	CBA1P12P25	CBA 1P 12 Pins 25mm ²	1	12	25	0.18	235	22	57
1002704	CBA1P18P25	CBA 1P 18 Pins 25mm ²	1	18	25	0.3	342	22	57
1002705	CBA1P57P25	CBA 1P 57 Pins 25mm ²	1	57	25	0.95	1036	22	57
1002706	CBA2P06P25	CBA 2P 6 Pins 25mm ²	2	6	25	0.1	128	22	57
1002707	CBA2P12P25	CBA 2P 12 Pins 25mm ²	2	12	25	0.2	235	22	57
1002708	CBA2P18P25	CBA 2P 18 Pins 25mm ²	2	18	25	0.33	342	22	57
1002709	CBA2P56P25	CBA 2P 56 Pins 25mm ²	2	56	25	1.1	1020	22	57
1002710	CBA3P06P25	CBA 3P 6 Pins 25mm ²	3	6	25	0.11	128	22	57
1002711	CBA3P12P25	CBA 3P 12 Pins 25mm ²	3	12	25	0.22	235	22	57
1002712	CBA3P18P25	CBA 3P 18 Pins 25mm ²	3	18	25	0.35	342	22	57
1002713	CBA3P57P25	CBA 3P 57 Pins 25mm ²	3	57	25	1.2	1036	22	57

CBA Comb busbar

Dimensions

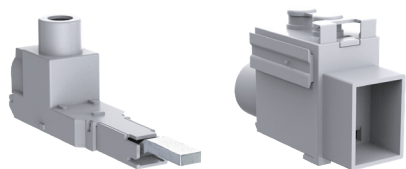
CBA

Unit: in [mm]



CBA Comb busbar

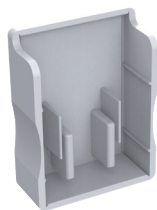
Accessory Specifications



FDA35 FDA50

Instructions:
Refer to assembly instructions of the up and bottom feeder terminals below.

FD	A	35
Product	Function type	Wiring capacity
FD: feed terminal	A: adapt to CBA series	35: 35mm ² (up feeding) 50: 50mm ² (bottom feeding)



EC	A	25
Product	Function type	Function code
EC: end cap	A: adapt to CBA series	25: adapt to CBA busbar 25mm ²



PC	A	25
Product	Function type	Function code
PC: protective cover	A: adapt to CBA series	25: adapt to CBA busbar 25mm ²

CBA Comb busbar

Accessory Dimensions

Technical Data

Product	Feeding terminal accessories	
Product Model	FDA35	FDA50
Standard	UL486	UL486
Rated current	110A	110A
Wiring capacity	14-2AWG(35mm²), 75 °C Cu	14-1AWG(50mm²), 75 °C Cu
Wiring torque	14-10AWG 5Nm; 8-2AWG 7Nm.	14-10AWG 5Nm; 8-1AWG 7Nm; Connect with the bus 3.5Nm
Feed direction	*top feeding	*bottom feeding
Adapted products	CBA busbar 1P/2P/3P	CBA busbar 1P/2P/3P

*Note: Refer to assembly instructions for details of up and bottom feeding directions

Ordering codes and descriptions

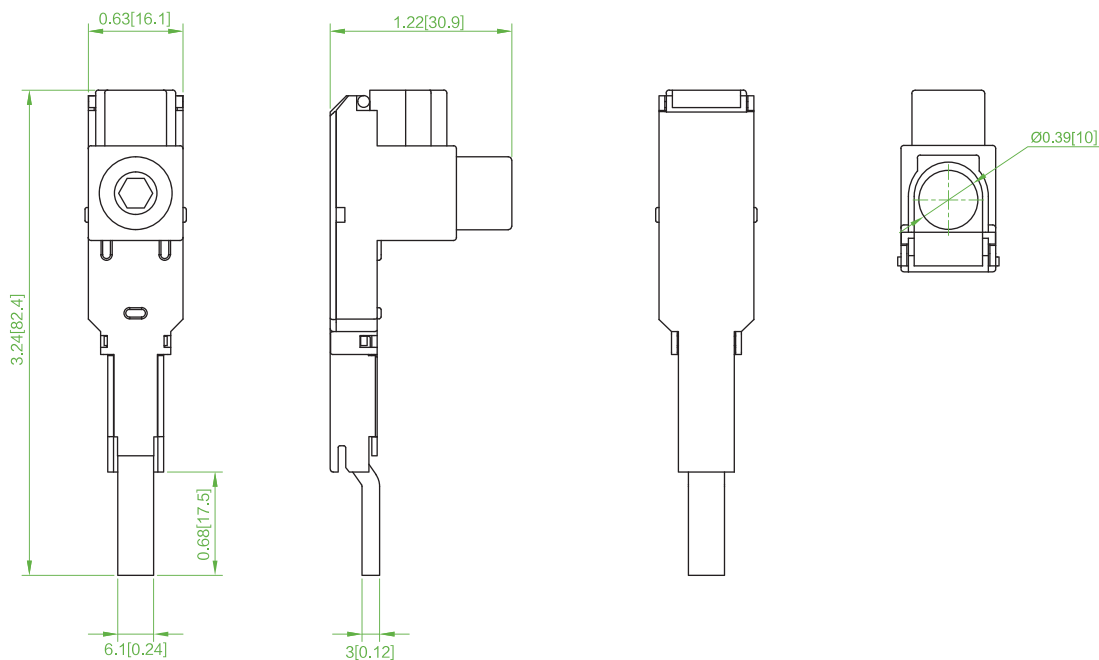
Ordering code	Material code	Material description	Poles	Stitches	Section cross (mm²)	Net weight (kg)	Depth (mm)	Width (mm)	Height (mm)
1002715	FDA35	Up feeding terminal	-	-	35	0.04	82	16.5	32
1002716	FDA50	Bottom feeding terminal	-	-	50	0.035	52	18	32
1002714	ECA25	End cap	-	-	-	0.002	10	22	29
1002717	PCA25	Protective cover	-	-	-	0.005	49	16.5	25

CBA Comb busbar

Accessory Dimensions

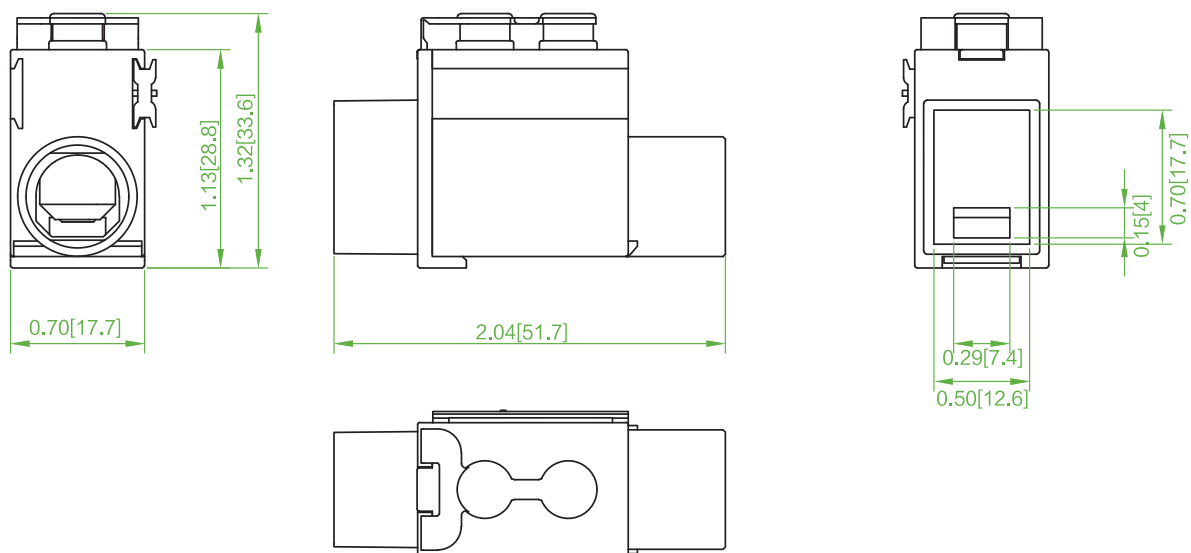
FDA35

Unit: in [mm]



FDA50

Unit: in [mm]

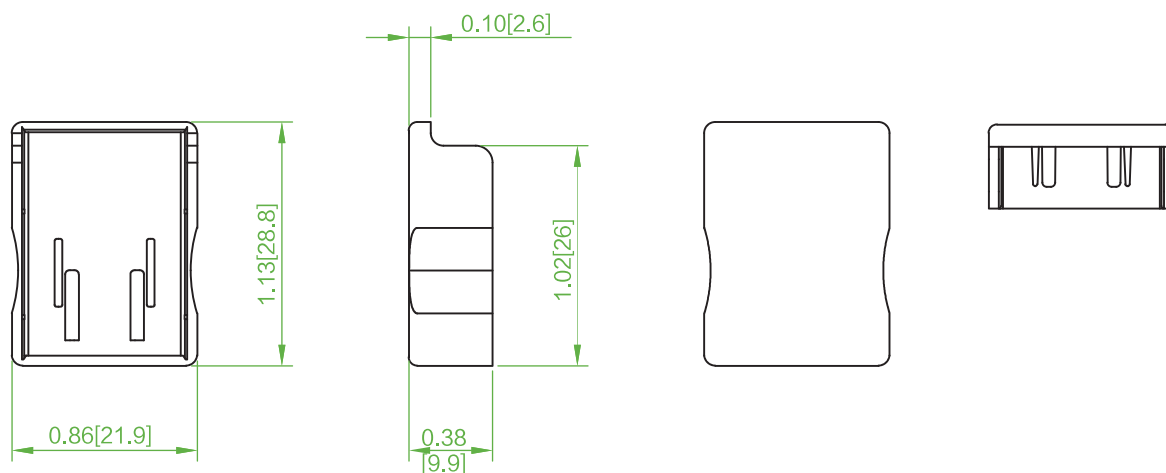


CBA Comb busbar

Accessory Dimensions

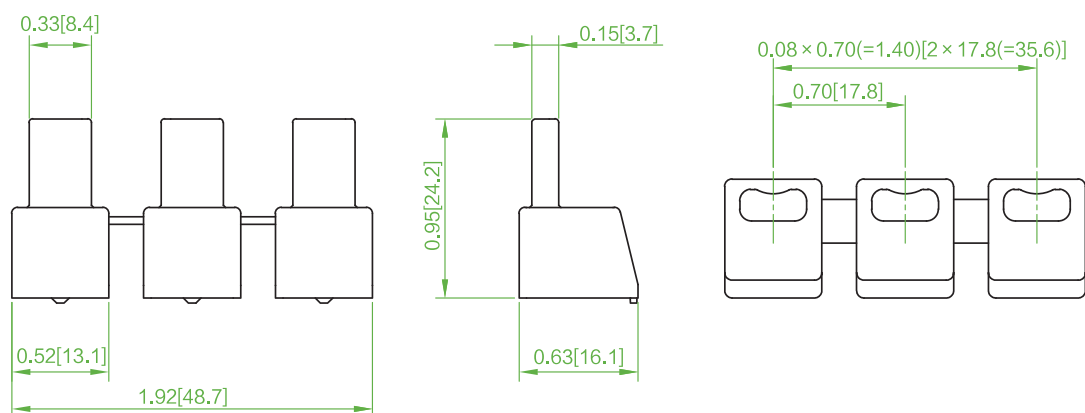
ECA25

Unit: in [mm]



PCA25

Unit: in [mm]

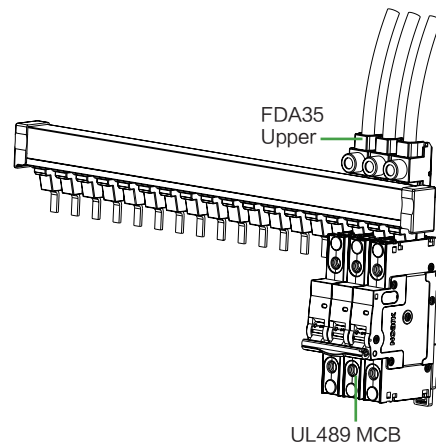
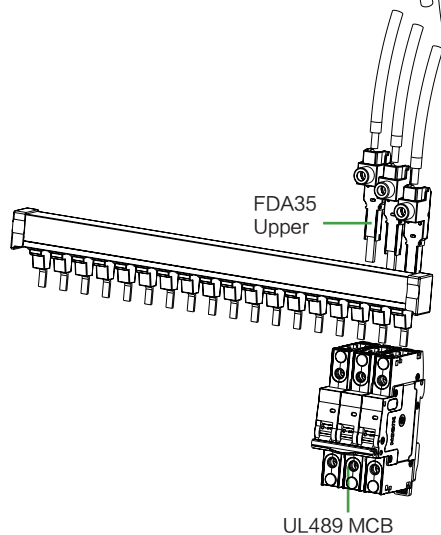
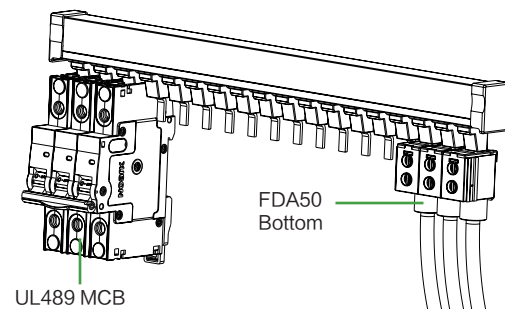
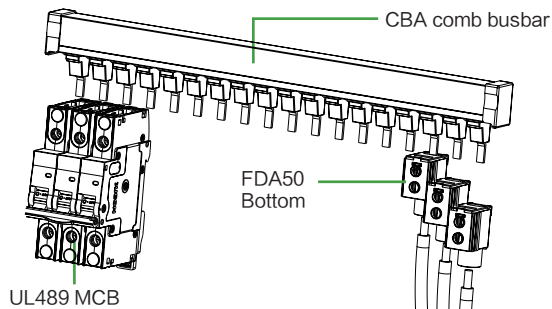
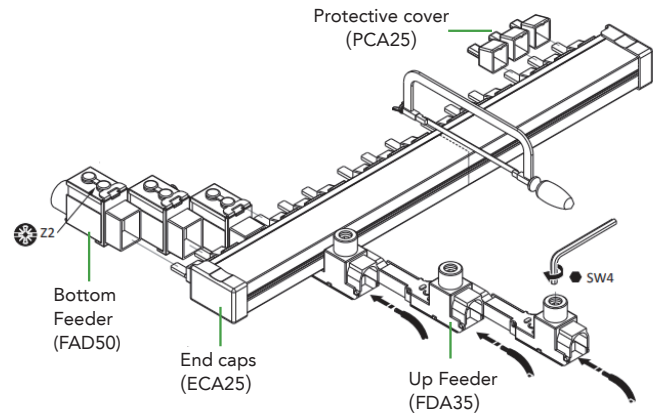
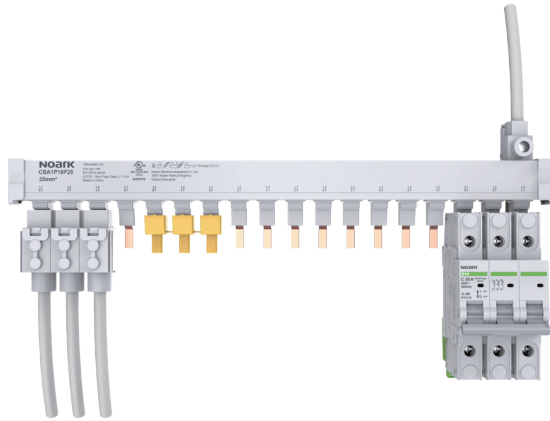


CBA Comb busbar

Assembly Instructions

Attention:

When busbars are cut, they must be deburred and completely cleaned of any dust and residual particles and parts from cutting process. Touch-proof only when used with the required end caps.





NOARK Electric North America
(626) 330-7007

na.noark-electric.com • nasales@noark-electric.com



Note: NOARK Electric reserves the right to make technical changes or modify the contents of this document without prior notice. With regard to purchase orders, the agreed particulars shall prevail. NOARK Electric nor any of its affiliates or subsidiaries shall be responsible or liable for potential errors or possible lack of information in this document. NOARK Electric reserves all rights in this document and in the subject matter and illustrations contained therein. Any reproduction, disclosure to third parties or utilization of its contents – in whole or in parts – is forbidden without prior written consent of NOARK Electric.