

NH2-125
Switch disconnecter

User Instruction

Safety Warning

- ① The product can only be installed and maintained by professionals.
- ② This product is strictly prohibited from being installed in an environment where there are flammable or explosive gases or moisture or condensation.
- ③ The power must be turned off when installing and maintaining the product.
- ④ It is strictly prohibited to touch the conductive parts of the product when it is in operation.
- ⑤ It is strictly prohibited for children to play with the product or packaging materials.
- ⑥ When the product is installed and used, the wiring screws should be tightened, the wires should not be easy to loosen or pull out and should be selected in strict accordance with the requirements, and the power supply and load should comply with the requirements.
- ⑦ The product cannot protect people from electric shock, protect the circuit from overload, or protect the equipment from leakage.
- ⑧ Do not install the product in places where gaseous media can corrode metals or damage insulation.

1 Purpose of Use

The NH2-125 isolating switch is suitable for power distribution and control circuits with AC 50Hz/60Hz frequency, rated voltage up to 230V or 400V and rated current up to 125A. It is used as the main switch at the appliance set terminal, and can also be used to control various low-power appliances and lighting infrequently. It is widely used in commercial and domestic applications.

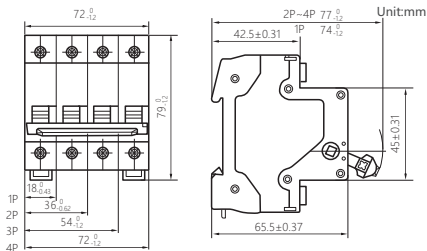
2 Key Technical Parameters

Table 1 Key Technical Parameters

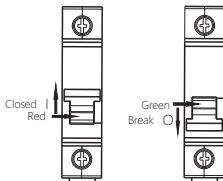
Altitude	≤ 2,000m
Pollution level	Level 2
Installation category	Class II and III
Use type	AC-22A, AC-21B
Rated operating voltage U _e (V)	1P, 2P: AC230V; 2P, 3P, 4P: AC400V
Enclosure protection level	IP20

3 Installation

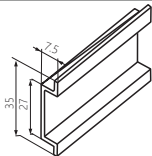
1. Outline and installation dimensions



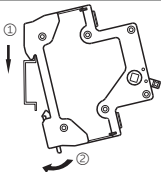
2. On-off indication



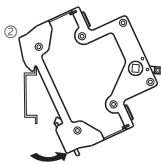
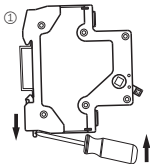
3. Installation



TH35-7.5 type mounting rail



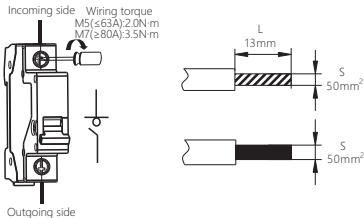
4. Disassembly



5. Wiring: Suitable for copper wire or busbar connection. See Table 2 for wire connection

Table 2 Copper wire cross-sectional area

Rated current In (A)	Copper wire cross-sectional area (mm ²)
32	6
63	16
100	35
125	50



4 Maintenance

The isolating switch should be checked regularly when it is in operation;

Operate the isolating switch manually for several times before it is powered on. The manual operation should be flexible and reliable without getting stuck.

Table 2 Analysis and Troubleshooting of Common Faults

Symptoms	Cause analysis	Troubleshooting method
Too high temperature	Improper model selection, the load current being greater than the rated current of the product	Change the product specifications
	Overload or short circuit at the load end	Troubleshoot
	Improper wiring, the wiring screws not tightened	Tighten the wiring screws
	The cross-sectional area of the selected wire is too small	Change the wire specifications
No power supply	Improper wiring, the wiring stripping too short or the wiring screws not tightened	Re-wiring

5 Environmental Protection

In order to protect the environment, the product or product parts should be disposed of according to the industrial waste treatment process, or be sent to the recycling station for assortment, dismantling and recycling.

CHINT

QC PASS

NH2-125
Switch disconnector
IEC/EN 60947-3

Check 51

Test date: Please see The packing

ZHEJIANG CHINT ELECTRICS CO.,LTD.

CHINT

CHINT ELECTRICS

NH2-125 Switch disconnecter User Instruction

Zhejiang Chint Electrics Co., Ltd.

Add: No.1, CHINT Road, CHINT Industrial Zone, North Baixiang,
Yueqing, Zhejiang 325603, P.R.China

E-mail: global-sales@chint.com

Website: <http://en.chint.com>

