

NB1-63H/2  
Moulded Case Circuit Breaker

---

# User Instruction

---

## Safety Warning

---

- ① Installation in any damp, condensed-phase environment with inflammable and explosive gas is forbidden. It is strictly prohibited to operate the product with wet hands.
- ② You are prohibited from touching the conductive part when the product is operating.
- ③ It is strictly prohibited to test the performance of the product by the direct contact of the hot wire against the grounding device or the direct short circuit of the hot wire and the neutral wire.
- ④ When the product is being installed or maintained, the power must be switched off.
- ⑤ The protection features of the product are set by the manufacturer. It is not allowed to open or adjust the circuit breaker at will.
- ⑥ The product must be wired and installed by qualified personnel and be checked regularly.
- ⑦ It is prohibited to let children play with the product or the package.
- ⑧ Prevent foreign objects from falling into the product.
- ⑨ Do not install the product at places where gas media can cause metal corrosion and insulation damage.
- ⑩ Tighten the wiring screws when installing the product to prevent wires from loose or being pulled out. Select wires strictly according to instructions and connect them to proper power supply and load.
- ⑪ This product does not provide protection for electric shock and electricity unbalance.

## 1 Purpose of Use

The NB1-63H/2 moulded case circuit breakers are applicable to circuits with frequency of AC 50/60 Hz, rated voltage up to 230/400 V and rated current up to 63 A. They provide overload and short circuit protection, and can also be used for infrequent switching of the circuit under normal circumstances.

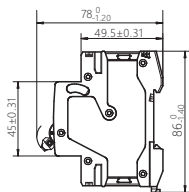
## 2 Key Technical Parameters

**Table 1 Key Technical Parameters**

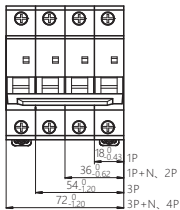
| No. | Parameter or performance                                 | Parameter value or performance value              |
|-----|--|---|
| 1   | Rated Working voltage ( $U_e$ )                          | 1P and 1P+N: AC230V<br>2P, 3P+N,3P and 4P: AC400V |
| 2   | Rated limit short-circuit breaking capacity ( $I_{cu}$ ) | 10 kA   |
| 3   | Altitude   | $\leq 2,000\text{m}$                              |
| 4   | Pollution level  | Level 2   |
| 5   | Protection level   | IP20  |

### 3 Installation

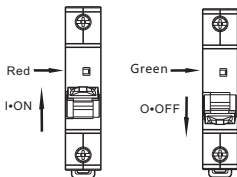
#### 1. Outline and installation dimensions



Unit:mm

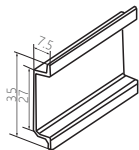


#### 2. On-off indication

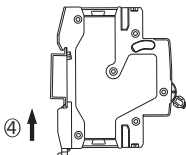
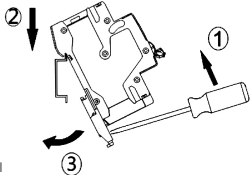


### 3. Installation

---

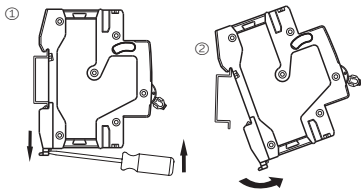


TH35-7.5 type mounting rail



## 4. Disassembly

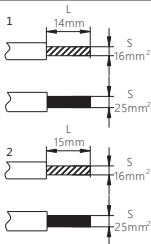
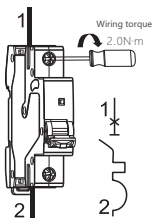
---



## 5. Wiring: copper wires only

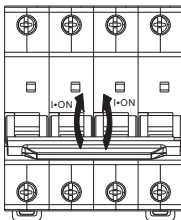
**Table 2 Copper wire cross-sectional area**

| Rated current (In)<br>(A) | Copper wire cross-sectional<br>area (mm <sup>2</sup> ) |
|---------------------------|--|
| 1-6                       | 1  |
| 10                        | 1.5  |
| 16, 20                    | 2.5  |
| 25                        | 4  |
| 32                        | 6  |
| 40, 50                    | 10   |
| 63                        | 16   |



## 6. Operation Instruction

It is recommended to carry out the closing operation from the middle of the handle.



## 4 Maintenance

1. Check the circuit breaker on a regular basis during operation;
2. After the circuit breaker cuts off the overload or short-circuit current, the fault should be eliminated before closing the circuit breaker.

**Table 3 Analysis and troubleshooting of common faults**

| Symptoms                                    | Cause analysis   | Troubleshooting method                        |
|---|--|---|
| Cannot close the circuit breaker by handle. | Short circuit at load end  | Eliminate the fault                           |
|   | Fault occurs to the operating mechanism.                                 | Replace the product                           |
|   | The rated current of the circuit breaker does not match the load current | Replace with product of proper specifications |
| Temperature is too high.                    | The wire is loose or not properly fixed by wiring screws.                | Tighten the wiring screws                     |
|   | The cross-sectional area of the selected wire is too small               | Replace with wire of proper specifications    |
| No power                                    | The wire strip length is too short.                                      | Re-strip the wire                             |
|   | The wire is loose or not properly fixed by wiring screws.                | Tighten the wiring screws                     |

## 5 Environmental Protection

In order to protect the environment, the product or product parts should be disposed of according to the industrial waste treatment process, or be sent to the recycling station for assortment, dismantling and recycling according to local regulations.



---

**CHINT**

**QC PASS**

NB1-63H/2  
Moulded Case Circuit Breaker  
IEC/EN 60947-2

Check 12

---

Test date: Please see The packing

---

**ZHEJIANG CHINT ELECTRICS CO.,LTD.**

---

**CHINT**

CHINT ELECTRICS

**NB1-63H/2**  
**Moulded Case Circuit Breaker**  
**User Instruction**

**Zhejiang Chint Electrics Co., Ltd.**

Add: No.1, CHINT Road, CHINT Industrial Zone, North Baixiang,  
Yueqing, Zhejiang 325603, P.R.China

E-mail: [global-sales@chint.com](mailto:global-sales@chint.com)

Website: <http://en.chint.com>

