



NB1-63 Series  
Miniature Circuit Breaker

---

# User Instruction

---

## Safety Warning

---

- ① The product can only be installed and maintained by professionals.
- ② Installation in any damp, condensed-phase environment with inflammable and explosive gas is forbidden.
- ③ When the product is being installed or maintained, the power must be switched off.
- ④ You are prohibited from touching the conductive part when the product is operating.
- ⑤ It is prohibited to let children play with the product or the package.
- ⑥ Tighten the wiring screws when installing the product to prevent wires from loose or being pulled out. Select wires strictly according to instructions and connect them to proper power supply and load.
- ⑦ The product cannot protect people from electric shock or against power imbalances.
- ⑧ Do not install the product at places where gas media can cause metal corrosion and insulation damage.
- ⑨ **The product is not suitable for the direct starting of high-inductive and high-capacity loads, such as fans, electric motors, electric heating equipment, capacitor cabinets, etc.**

## 1 Purpose of Use

The NB1-63 series miniature circuit breakers are applicable to circuits with frequency of AC 50/60 Hz, rated voltage up to AC 277/480 V or up to DC 110/125 V and rated current up to 63 A. They provide overload and short circuit protection, and can also be used for infrequent switching of the circuit under normal circumstances.

## 2 Key Technical Parameters

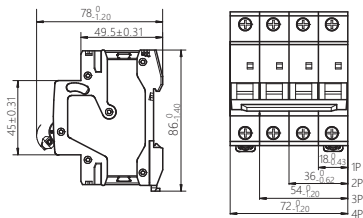
Table 1 Key Technical Parameters

|  |  |
|--|--|
| Altitude   | ≤ 2,000m   |
| Pollution level  | Level 2  |
| Installation category                                    | Class II and III   |
| Rated operating voltage<br>U <sub>e</sub> (V)            | AC 277V (1P)                      DC 110V (1P)<br>AC 480V (2P, 3P, 4P)          DC 125V (2P) |
| Release type   | AC : B (3~5) In, C (5~10) In, D (10~14) In<br>DC : B (4~7) In, C (7~14) In                   |
| Rated short-circuit<br>breaking capacity I <sub>cn</sub> | AC: 5000A, DC: 10000A  |
| Enclosure protection class                               | IP20   |
| Standard   | UL1077   |

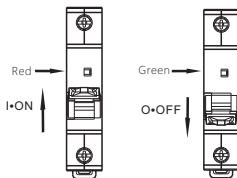
### 3 Installation

#### 1) Outline and installation dimensions

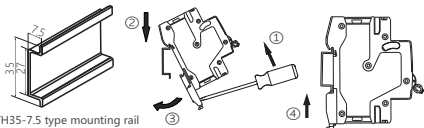
Unit:mm



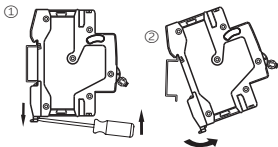
#### 2) On-off indication



### 3) Installation







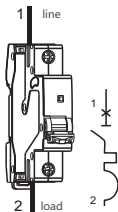
### 4) Disassembly



### 5) Wiring

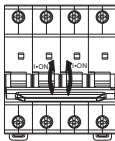
**Table 2 Wiring requirements**

|   |  |
|---|--|
|  | <br>Z2 |
|  | 75°C WIRE#16<br>-#6AWG<br>Cu only  |
|  | 2.0 N•m/<br>17.8 lbs•in  |



## 6) Operation Instruction

It is recommended to carry out the closing operation from the middle of the handle.



## 4 Maintenance

1. Check the circuit breaker on a regular basis during operation;
2. After the circuit breaker cuts off the overload or short-circuit current, the fault should be eliminated before closing the circuit breaker.

**Table 3 Analysis and troubleshooting of common faults**

| Symptoms                                    | Cause analysis   | Troubleshooting method                        |
|---|--|---|
| The handle cannot close the circuit breaker | Short circuit at load end  | Eliminate the fault                           |
|   | Fault occurs to the operating mechanism.                                 | Replace the product                           |
|   | The rated current of the circuit breaker does not match the load current | Replace with product of proper specifications |
| Temperature is too high.                    | The wire is loose or not properly fixed by wiring screws.                | Tighten the wiring screws                     |
|   | The cross-sectional area of the selected wire is too small               | Replace with wire of proper specifications    |
| No power                                    | The wire strip length is too short.                                      | Re-strip the wire                             |
|   | The wire is loose or not properly fixed by wiring screws.                | Tighten the wiring screws                     |

## 5 Environmental Protection

In order to protect the environment, the product or product parts should be disposed of according to the industrial waste treatment process, or be sent to the recycling station for assortment, dismantling and recycling according to local regulations.

---

**CHINT**

**QC PASS**

NB1-63 Series  
Miniature Circuit Breaker  
UL1077

Check 12

---

Test date: Please see The packing

---

**ZHEJIANG CHINT ELECTRICS CO.,LTD.**

---

**CHINT**

CHINT ELECTRICS

**NB1-63 Series  
Miniature Circuit Breaker  
User Instruction**

**Zhejiang Chint Electrics Co., Ltd.**

Add: No.1, CHINT Road, CHINT Industrial Zone, North Baixiang,  
Yueqing, Zhejiang 325603, P.R.China

E-mail: [global-sales@chint.com](mailto:global-sales@chint.com)

Website: <http://en.chint.com>

