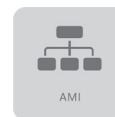
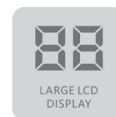




CHS160 Single Phase Smart Meter

ELITE series

- ▶ Ultra Anti-Tamper
- ▶ Large LCD Display
- ▶ Advanced AMI Application



CHS160 Single Phase Smart Meter

SPECIFICATIONS

Measurement

- Compliance with IEC standard
- Element: 1P2W,1P3W
- Accuracy: Class 1.0 for active, Class 2.0 for reactive

Voltage

- Nominal voltage (U_n): 110V, 120V, 220V, 230V, 240V
- Operating range: $0.75U_n \sim 1.2U_n$
- Power consumption: $\leq 2W, 10VA$

Current

- 5(60)A/5(80)A/5(100)A

Frequency

- 50Hz or 60Hz

Real-time Clock

- Accuracy within 0.5 seconds per day at 23°C

LCD Display

- 7 characters of 6 segment display
- Digital size: 5.8mm \times 13mm
- Display available without main power LCD Display
- With backlight

Battery (Optional)

- Built-in Battery (option 1)
- Replaceable Battery (option 2)
- Voltage: 3.6V
- Backup time: 15 years with power

Measured Values

- Import/Export/Absolute/Algebraic kWh
- Import/Export/ kvarh
- Instantaneous kW, kvar, kVA, Irms, Vrms, Frequency, Power factor

Maximum Demand

- Maximum demand: kW, kvar
- Block or slide demand
- Intervals programmable from 5 to 60 minutes

Time of Use

- 2 rates (default)
- Up to 12 seasons each year
- Up to 12 week table
- Up to 8 day table and 10 time interval in a day

Relay (Optional)

- One relay
- Up to 10000 operations

Event Logs

- Standard event, tamper event, control event, grid event
- Configurable event alarming system
- Meter error state indication on LCD

Load Profile (Optional)

- Up to 2 channels
- Over 11520 records per channel

Communications

- Optical port
- Built-in LoRa/RF/Bluetooth module (optional)

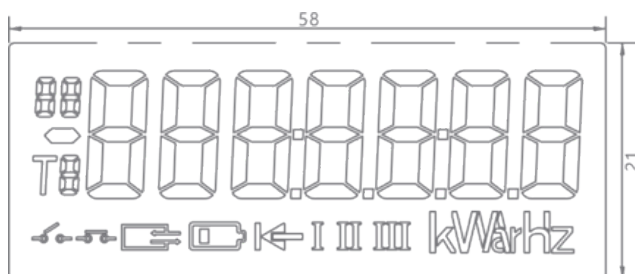
Environmental

- Operating range limit: -40°C to $+75^\circ\text{C}$
- Storage range limit: -40°C to $+85^\circ\text{C}$
- Relative humidity: $\leq 95\% \text{ RH}$
- Ingress protection: IP54

Dimensions and Weight

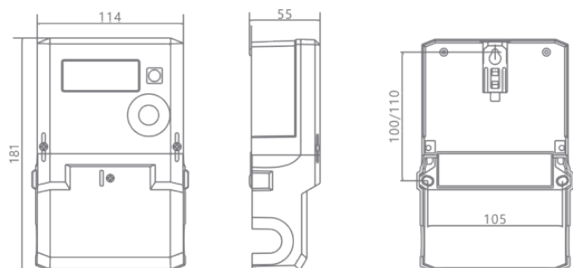
- Dimensions: 181mm \times 114mm \times 55mm
- Weight: 1.0 kg (Approx.)

LCD INDICATION



• Units: mm

METER DIMENSIONS



• Units: mm



Zhejiang CHINT Instrument & Meter Co., Ltd

Add: No.560, Yueming Road, Binjiang District, Hangzhou, Zhejiang, China P.C: 310052 Tel: +86-571-56977777

Fax: +86-577-62919588 E-mail: chintmeter@chint.com

Website: <http://en.chintim.com/>